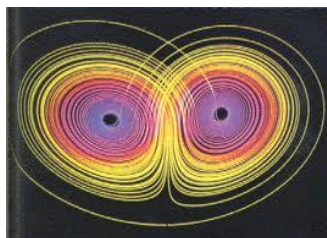


GEORGIA STATE UNIVERSITY

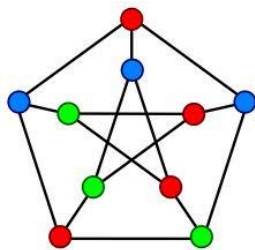
GRADUATE PROGRAMS IN MATHEMATICS AND STATISTICS

Programs: The Department of Mathematics and Statistics offers **PhD** with concentrations in Mathematics, Bioinformatics, Biostatistics, and Collegiate Mathematics Education, and **MS** with no concentration or concentration in Bioinformatics, Biostatistics, Discrete Mathematics, Scientific Computation, Statistics, and Statistics and Allied Field. The department has a diversified faculty conducting research in several areas including algebraic geometry, analysis, bioinformatics, biostatistics, biomathematics, combinatorial matrix theory, combinatorics and graph theory, commutative algebra, dynamical systems, collegiate mathematics education, inverse problems, and scientific computations. These concentrations are programs designed for persons who wish to prepare for careers as professional mathematicians or statisticians in industry, business, education, academia or government. These programs provide advanced training in applied mathematics, pure mathematics or applied statistics for those who are presently working in areas that use mathematics or statistics, as well as for those who plan to enter these areas. The programs present an optimal balance among the broad range of mathematical methods, statistical techniques, and computational skills. For details on the program curriculum, visit www.mathstat.gsu.edu/students/grad/index.html.

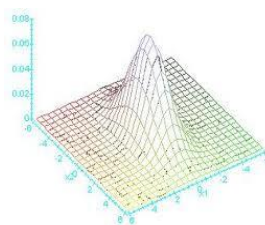
Financial Support: Graduate Research Assistantship (GRA), Graduate Teaching Assistantship (GTA), and Graduate Laboratory Assistantship (GLA) are available for both MS and PhD students. **More than 50% of the first year MS students have financial support, the department will offer assistantships to all second year MS students, including tuition waiver, if they qualify.** Other financial support opportunities may be available through faculty members' individual grants, or from Georgia State University research initiatives (such as Brains & Behavior and Molecular Basis of Disease), or by working in the Mathematics Assistance Complex. All these assistantship recipients are automatically eligible for tuition waiver.



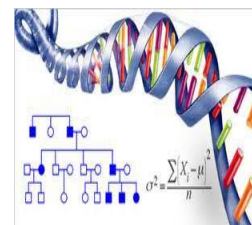
Dynamical System



Graph Theory



Advanced Statistical Research



Statistical Genetics

Application Deadline:

Spring	November 15
Summer	May 1
Fall	July 1

Financial Assistantship Deadline

Spring	October 15
Summer	February 15
Fall	February 15

The University: Georgia State University is the Southeast's leading urban research institution. It is on the list of the top 100 public universities for doctoral degrees awarded. More than 250 fields of study are offered through some 55 accredited degree programs at the bachelor's, master's, specialist and doctoral levels. Our student body is the best qualified and most diverse in our

student body is the best qualified and most diverse in our history. More than 50,000 students are seeking degrees at Georgia State. Students come to our campus from every county in Georgia, every state in the nation and 160 countries. The campus is located in the heart of downtown Atlanta.



The Department: Currently, the department has twenty five tenured or tenure-track faculty members,

Contact:

URL: www.mathstat.gsu.edu and <http://mathstat.gsu.edu/graduate/>

Address: Department of Mathematics & Statistics
25 Park Place, 14th floor; Atlanta, Georgia 30303-3083

fourteen lecturers and academic professionals, and about one hundred graduate students. The Department's faculty members are very active in research and publication. They regularly publish in top-ranked journals, more than 1/3 of the research faculty members are supported by various federally funded grants, and several members have been serving on editorial boards of journals. They have been directing PhD dissertations and MS theses within the department, joint with other departments of the College of Arts and Sciences, and in conjunction with other universities.

([Mathematics program](#)) Dr. Florian Enescu, Graduate Director of Mathematics, **Tel:** (404) 413-6442; **Email:** fenescu@gsu.edu

([Statistics program](#)) Dr. Gengsheng (Jeff) Qin, Graduate Director of Statistics, **Tel:** (404) 413-6434; **Email:** gqin@gsu.edu;

Mathematics and Statistics Graduate Faculty:

Marina Arav – PhD in Mathematics, Technion, Israel, 2000; Matrix Analysis, Linear Algebra

Mark P. Becker (GSU President) – PhD in Statistics, Pennsylvania State University, 1985; Biostatistics

Igor Belykh – PhD in Mathematics, University of Nizhny Novgorod, Russia, 2000; Dynamical Systems and Computational Neuroscience

Vladimir Bondarenko – PhD in Physics, Moscow State University, 1990; Neuronal and Cardiac Cell Models and Neural Networks

Guantao Chen (Dept. Chair) – PhD in Mathematics, University of Memphis, 1991; Graph Theory and Bioinformatics

Florian Enescu – PhD in Mathematics, University of Michigan, Ann Arbor, 2001; Commutative Algebra, Algebraic Geometry

Frank Hall – PhD in Mathematics, North Carolina State University, 1973; Linear Algebra, Matrix Theory

Yi Jiang – PhD in Physics, University of Notre Dame, 1998; Bioinformatics and Biophysics

Zhongshan (Jason) Li – PhD in Mathematics, North Carolina State University, 1990; Combinatorial Matrix Theory and Graph Theory

Ruiyan Luo – PhD in Statistics, University of Wisconsin-Madison, 2007; Biostatistics

Valerie A. Miller – PhD in Mathematics, University of South Carolina, 1985; Numerical Analysis, Mathematical Visualization

Xiaoyi Min – Ph.D. in Statistics, University of Missouri, USA, 2012; Bayesian statistics, statistical genetics, meta-analysis

Yaroslav Molkov – Ph.D. in Physics and Mathematics, Russian Academy of Sciences, 2009; Theoretical and Computational Neuroscience

Mariana Montiel – PhD in Mathematics, University of New Hampshire, 2005; Mathematical Music Theory, Collegiate Math Education

Remus Osan – PhD in Physics, University of Pittsburgh, 2002; Bioinformatics

Liang Peng – Ph.D. in statistics, Erasmus University Rotterdam, 1998; Extreme Value Theory in Finance, Nonparametric Statistics, Risk Management

Xin Qi – PhD in Probability Theory, University of Wisconsin-Madison, 2007; Bioinformatics, High-dimensional Data Analysis and Its Applications

Gengsheng (Jeff) Qin – PhD in Statistics, Hong Kong University of Science and Technology, 1999; Statistical Methods in Diagnostic Medicine

Alexandra Smirnova – PhD in Mathematics, Kansas State University, 2000; Applied Inverse Problems: Theoretical and Computational Aspects

Michael Stewart – PhD in Electrical Engineering, University of Illinois – Urbana, 1996; Matrix Theory and Numerical Analysis

Hendricus van der Holst – PhD in Mathematics, University of Amsterdam, 1996; Bioinformatics and Combinatorial Optimization

Draga Vidakovic – PhD in Mathematical Education, Purdue University, 1993; Math Education, Technology in Teaching

Yongwei Yao – PhD in Mathematics, University of Kansas, 2002; Commutative Algebra

Xiaojing Ye – PhD in Mathematics, University of Florida 2011; Applied and Computational Mathematics

Jing Zhang - Ph.D, Statistics, Harvard University, USA, 2009; Statistics and Bioinformatics

Yi Zhao – PhD in Mathematics, Rutgers University, 2001; Combinatorics and Graph Theory.

Yichuan Zhao – PhD in Statistics, Florida State University, 2002; Nonparametric Statistics, Survival Analysis, Monte Carlo Methods

Georgia State University does not discriminate on the basis of race, color, religion, national origin, sex, age, disability or veteran status.